

Features

- ✓ 12"/15" Colour TFT Display, led backlight .
- ✓ Operating Mode Selection: Neonatal/ Pediatric/Adult.
- ✓ Visual and Audio alarms, adjustable.
- ✓ Patient management, name and age and id.
- ✓ Network with Central Station Software,
- ✓ Built-in removable and rechargeable lithium battery,
- ✓ Easy operating UI with both Keypad menu.
- ✓ Powerful data storage and management, Trend graph, Trend table, etc
- ✓ Arrhythmia analysis and S-T segment analysis.
- ✓ Compatible to Neonatal, Pediatric, Adult Patients



Utility Cart



Wall Mounted

STANDARD PARAMETERS:

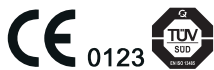
3/5-Lead ECG, Hwetime SpO2, NIBP, RESP, 2-Temp, PR, Thermal Recorder

OPTIONAL:

EtCO2 , Touchscreen , WLAN accessory, Nellcor-SPO2, 2-IBP Masimo SpO2, Masimo AGM.



55 The Avenue
London
E30 5AD
www.astramed.co.uk

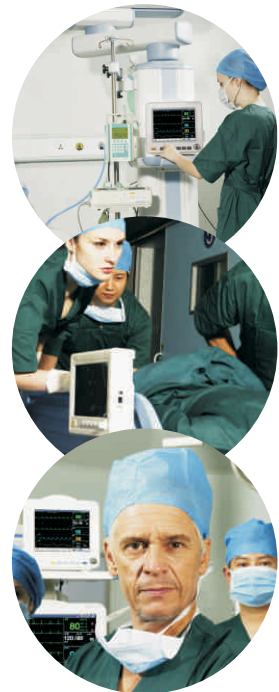


Handset two-dimensional code



Vital Signs Monitor

A 12/ A 15

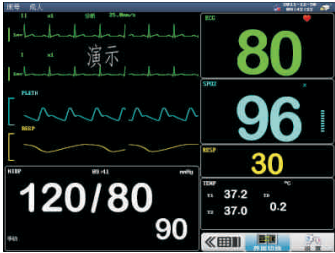


All Rights Reserved.
The product specifications are subject to change without further notice.
See instructions for contraindication or precautions

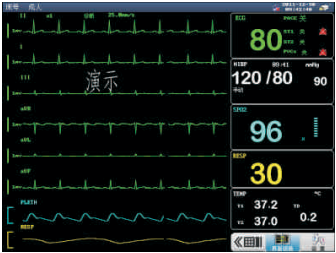
Suitable for ICU/CCU, Operation Room, Postoperative observatory, Emergency room, General Ward, etc



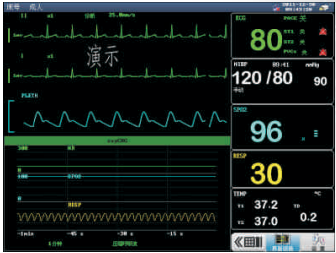
Standard Interface



Max 8 waveform display simultaneously
max 6 leads ECG waveforms display



OxyCRG interface



Big Font interface

ECG

Number of Leads	3 or 5 leads
Lead View	
User Selectable:	I,II,III,aVR,aVL,aVF,V(5 Lead) ;I,II or III(3 lead)
Gain Slection	x1/4,x1/2,x1 and x2
Frequency Response	
Diagnostic	0.05 to 90HZ
Monitor	0.5 to 35 HZ
Surgery	1-15HZ
Calibration Signa	1 (mV p-p), Accuracy ±5%
ECG Signal Range	±8 m V (Vp-p)
Review	Available

NIBP

Technique	Oscillometric during inflation
Range	Adult 40-270mmHg Pediatric 40-240mmHg Neonate 10-150mmHg
Measurment cycle	<40 sec,typical
Cycles(Selectable)	2,3,5,10,15,30min 1,2,4hr
STAT model	5 minutes of continuous reading
Max Allowable Cuff Presure	
Adult	300 mmHg
Pediatric	240mmHg
Neonate	150 mmHg
Resolution	1mmHg
Transducer Accuracy	±2mmHg or±2% of reading

Respiration Rate

Rate	Adult: 0 ~ 120 rpm Neo/Ped 0 ~ 150 rpm
Resolution	1rpm
Accuracy	± 2 breath/min

Power Requirement

Voltage	AC100-240V,50HZ
Power Consumption	8Watts,typical
Battery	1 sealed lithium battery
Battery Life	8hour typical
Recharge time	4.5 hours

Pulse Oximetry

Range	0 to 100%
Resolution	1%
Accuracy	70% to 99% range ±2% 1% to 69%range ±5%
Method	Dual wavelength LED

Heart(Pulse) Rate

Range	Adult 15-300 bpm
Pediatric	15-350 bpm
Accuracy	±2bpm or ±3% whichever is greater

Environment

Operating Temperature	59°--95°F(15°--35°C)
Storage Temperature	23°--122°F(-5°--50°C)
Humidity	15% to 90%

Trends

Memory	96 hr at 30 second intervals for a NIBP reading every 5 minutes
Display	tabular;graphical



Durable probes
connector
with high quality



High quality Battery
2.5hours Battery Life



Build in thermal
printer



3 level Audible and
visual alarming